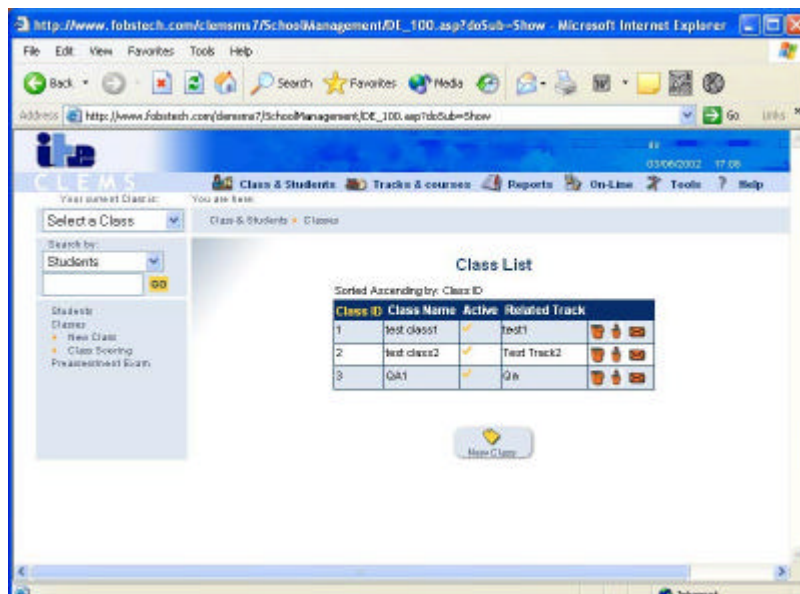




CLEMS-1 Computerized Learning and Evaluation Management System

- **Internetable Management System**



The ideal learning process requires that the progress of each student can be easily monitored, stored in an archive and retrieved to generate various student achievement reports. Ideally, each student should be tested to determine his level of aptitude and comprehension to select the ideal study path for him.

The effective learning process requires online evaluation of student performance during each learning session so that the instructor can monitor the progress of each student throughout the session. Once the student achievement data is added to the database, management tools can generate student achievement reports that indicate to the instructor the level of competence that the student has reached. The instructor can assign remedial action if required, before the student falls too far behind the class.

The Computer Learning and Evaluation Management System (CLEMS) can be readily installed and operated in both Internet and Intranet environments; providing an easy-to-use and reliable learning management system for conventional classrooms and labs as well as for distance learning applications.

SPECIFICATIONS

DESCRIPTION

CLEMS is an internet/intranet application that uses a Browser-based user interface, Internet Explorer, the dominant product on the market.

The application uses standard Internet infrastructure tools both on the server side and the client side. The client side is based upon XML, DHTML & Java Script for displaying the user interface for the application. The client side supports Microsoft Explorer 5.x web browsers.

The server side is based upon Microsoft technology, which uses Microsoft Windows NT5 or Windows 2000 with IIS5 as the web server. It uses ASP as a server script language for performing the business logic and accessing the database. It uses Microsoft's ADO/OLEDB as the database access infrastructure and Microsoft Access as the database software.

FEATURES:

Learner Assessment

CLEMS allows the instructor to define preliminary examinations to evaluate the level of competence for each student in each of the relevant subjects of study.

Adaptive study tracks

CLEMS dynamically assigns the most suitable predefined study path or track to a learner according to the preliminary exam he/she performed and his/her score in the exam. It assigns the most suitable study path to each student. This eliminates the need for a student to learn material that he has already achieved the required level of proficiency. Consequently, this also prevents students from starting a course without having achieved the required prerequisite knowledge.

Dynamic score scheme

CLEMS allows the administrator to define the score for a multiple-choice question or measurement according to the number of trials.

Control remote hardware

The instructor or assessor can insert faults in various hardware training systems such as the EB-2000 library of boards, the EB-6XX series of simulators, the Smart Car, Smart Truck, Common Rail Diesel Injection and more. Fault insertion may be controlled from the instructor station in the lab or from a remote assessor station over the Internet.

Reports

The instructor can generate various reports for any student or class and for any course or group of courses.

Link to third party software

CLEMS can accept student achievement reports from other courseware platforms that have been adapted to conform to the standard information exchange protocol.

MINIMUM STUDENT AND INSTRUCTOR COMPUTER CONFIGURATION

Pentium II 350MHz with:
64 MB RAM
40 X CD
COM1 or COM2 port
SVGA card with 8 Mbytes
Operating System: Windows 98/NT/2000/XP
Microsoft Internet Explorer 5 or 6

MINIMUM SERVER COMPUTER CONFIGURATION

Pentium IV 1200MHz with:
512 MB RAM
50 GB hard disk (depends on installed courses)
40 X CD
Operating System: Windows NT5 or WIN2000 or later

